

NATIONAL DISASTER MANAGEMENT AGENCY (NaDMA) MEDIA RELEASE

Beryl a Dangerous Category 3 Hurricane Release #13

St. George's, Grenada – Monday 1st July 2024, 5:00 a.m.

Grenada, Carriacou, and Petite Martinique are currently under a Hurricane Warning.

At 5:00 am, the eye of Hurricane Beryl was located near latitude 11.7 North, longitude 59.9 West, about 125 miles ESE of Grenada. Beryl is moving toward the west near 20 mph.

A continued quick westward to west-northwestward motion is expected during the next few days. On the forecast track, the center of Beryl is expected to move across the Windward Islands this morning and across the southeastern and central Caribbean Sea late today through Wednesday. Maximum sustained winds remain near 120 mph with higher gusts.

Beryl is a category 3 hurricane on the Saffir-Simpson Hurricane Wind Scale. Fluctuations in strength are likely during the next day or so, but Beryl is expected to remain an extremely dangerous major hurricane as its core moves through the Windward Islands into the eastern Caribbean.

Some weakening is expected in the central Caribbean by midweek, though Beryl is forecast to remain a hurricane. Hurricane-force winds extend outward up to 35 miles from the center and tropical-storm-force winds extend outward up to 125 miles. Grantley Adams International Airport in Barbados recently reported sustained winds of 45 mph with a gust of 60 mph. The estimated minimum central pressure is 965 mb.

The Met Office and NaDMA continue to monitor this system.

The public is encouraged to follow the advisories and forecasts the Meteorological Office and NaDMA issued.

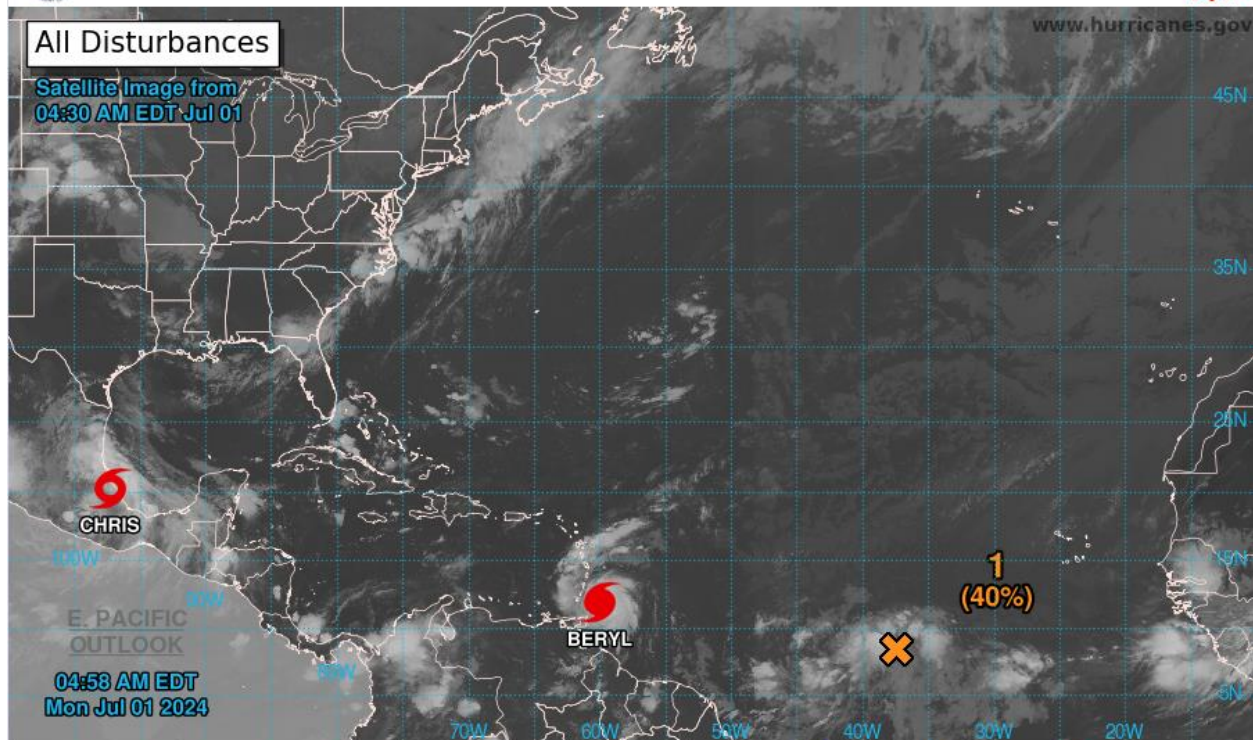
For additional information, contact Mrs. Ruth Jacob-Roberts, Public Information Officer at NaDMA 440-8390-4: cell 533-0766, or email: admin@nadma.gd and pro@nadma.gd.

NaDMA is the official source for all disaster-related information in Grenada.



Two-Day Graphical Tropical Weather Outlook

National Hurricane Center Miami, Florida



Current Disturbances and Two-Day Cyclone Formation Chance: < 40% 40-60% > 60%

Tropical or Sub-Tropical Cyclone: Depression Storm Hurricane

Post-Tropical Cyclone or Remnants

