



NATIONAL DISASTER MANAGEMENT AGENCY (NaDMA)

MEDIA RELEASE

Adverse Weather Advisory - beginning the night of Saturday, October 18th, 2025

St. George's, Grenada - Saturday, October 18th, 2025. 9:00 p.m.

The Grenada Meteorological Service has advised the National Disaster Management Agency (NaDMA) that it is currently monitoring convective activity associated with two tropical waves approaching the Windward Islands.

Synopsis:

Two active tropical waves are making their way across the Tropical Atlantic. The first is located at 59°W moving at 15 knots. The second is located at 51°W moving at approximately 15 to 20 knots. The second tropical wave (at 51°W) has a low, 10%, chance of development over the next 48 hours and medium, 40%, chance of development over the next 7 days. Regardless of development, this system is expected to bring moderate to heavy rainfall, gusty winds and rough seas to the Windward Islands Sunday into Monday morning.

Forecast for the State of Grenada:

Models suggest convection associated with the first tropical wave may lead to moderate showers, which may become heavy at times, and possible thunderstorms tonight, Saturday, October 18, 2025.

Models suggest the second tropical wave may bring similar activity on Sunday (moderate showers, which may become heavy at times, and possible thunderstorms) with conditions extending into Monday.

Please note that there are no watches or warnings in effect for the State of Grenada at this time. However, a flash flood advisory is currently in effect.

Residents should prepare for the potential of heavy, showery activity and gusty winds during the next 48 hours.

Citizens are urged to monitor the weather conditions and pay attention to the information issued by the Meteorological Service and NaDMA.

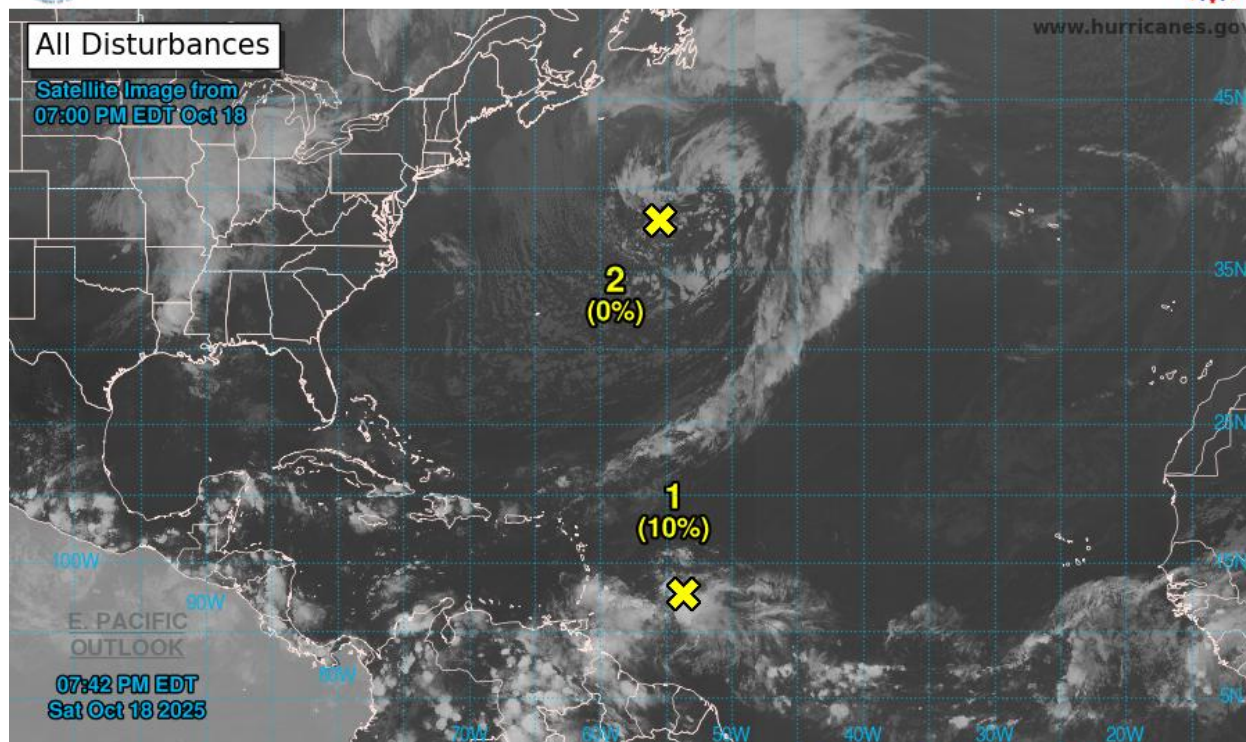
The Meteorological Service and NaDMA will continue to monitor the weather and provide updates as necessary.

For additional information, please contact Mrs. Ruth Jacob-Roberts, Public Information Officer at NaDMA on 440-8390-4: mobile 533-0766, or email: admin@nadma.gd and pro@nadma.gd.



Two-Day Graphical Tropical Weather Outlook

National Hurricane Center Miami, Florida



Current Disturbances and Two-Day Cyclone Formation Chance: < 40% 40-60% > 60%

Tropical or Sub-Tropical Cyclone: Depression Storm Hurricane

Post-Tropical Cyclone or Remnants